



ELSPETH BELL, PH.D., LLC

## Potential Signs of Hoarding

- ❑ Blocked access or exit to any door or window due to clutter
- ❑ Clutter that impedes or prevents movement in and around residence (narrowing of hallways, portions of rooms blocked off)
- ❑ Clutter that prevents any part of the inside or outside of a dwelling to be used for its intended purpose
- ❑ Excessive trash and garbage inside or outside residence (not in designated receptacles)
- ❑ Signs of rodent/insect infestation or factors associated with health concerns that could have an impact on resident or neighbors
- ❑ Visible damage stairs, ceilings, floors or walls
- ❑ A large number of animals that are not being cared for and cause a health risk for the occupants, neighbors, and/or general public
- ❑ Kitchen and bathroom appliances that are not usable
- ❑ Combustible materials stored too close to a source that could ignite it or potentially ignite it, i.e. stove, over heater vents, portable electric heaters, furnace, gas cans, fireplaces
- ❑ Absence of working smoke detectors
- ❑ Gas cans or other noxious materials, stored in a residence, of which the fumes become a potential health hazard
- ❑ Absence of running water, heat and electricity

5850 Waterloo Road, Suite 140 Columbia, MD 21045  
Phone: (410) 480-8052 Fax: (410) 480-7081  
ebell@elspethbellphd.com  
www.elspethbellphd.com

## Clutter Image Rating: Living Room

Please select the photo that most accurately reflects the amount of clutter in your living room.



1



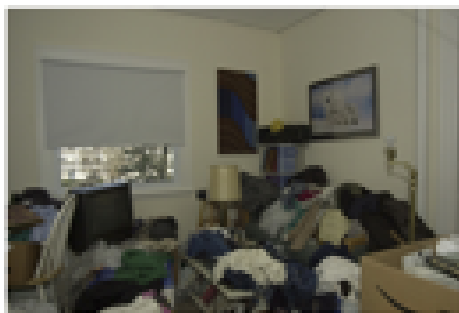
2



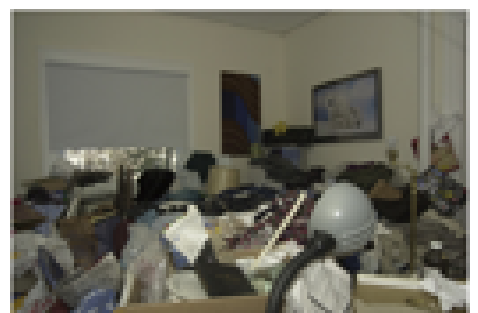
3



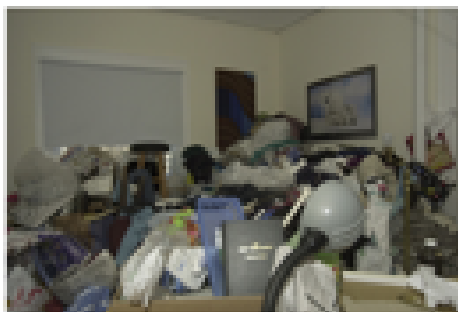
4



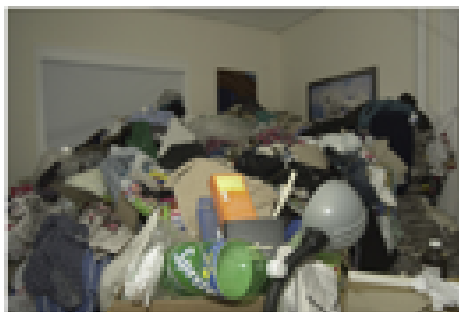
5



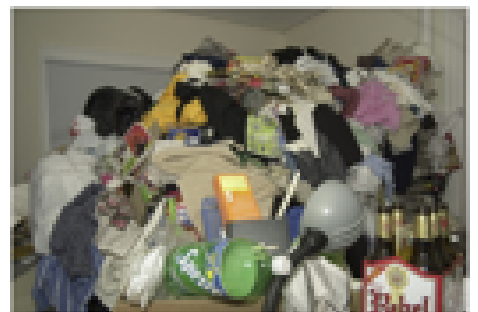
6



7



8



9